

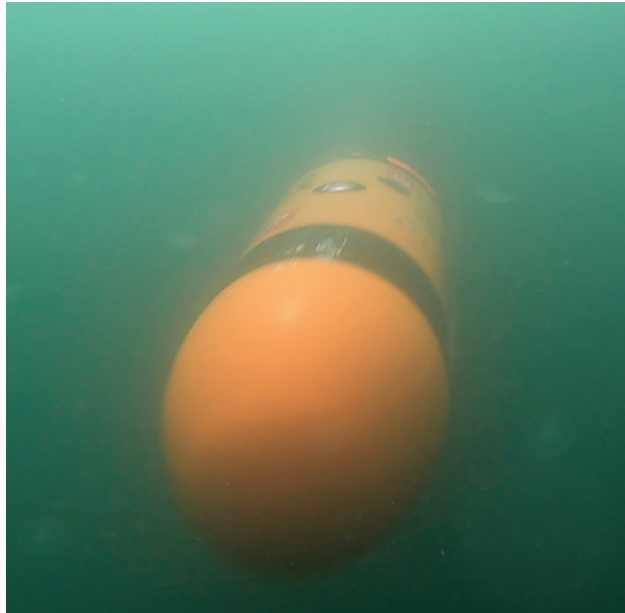
NAVAL SYSTEMS



AKYA
HEAVYWEIGHT TORPEDO



AKYA is a fully indigenous design, new generation Heavyweight Torpedo launched from submarines to engage submarines and surface targets of various types. AKYA is a high speed, long range, fully autonomous or fibre optic wire guided torpedo with active/passive sonar homing head, In addition, AKYA employs wake homing guidance for surface targets.



TECHNICAL SPECIFICATIONS

Range	50+ km
Speed	45+ knots
Targets	Submarines, Surface Targets
Guidance	Active/Passive Sonar Head with Acoustic Counter-Countermeasure Capability and Wake Guidance
Guidance Mode	Self Guidance Onboard Guidance Via Fibreoptic Cable
Fuze	Proximity / Impact
Warhead	Insensitive Warhead with Underwater Shock Effect
Launch Type	Swim - Out
Propulsion System	Brushless DC Electrical Motor + Counter - Rotating Propeller System
Battery	High-Energy Chemical Battery