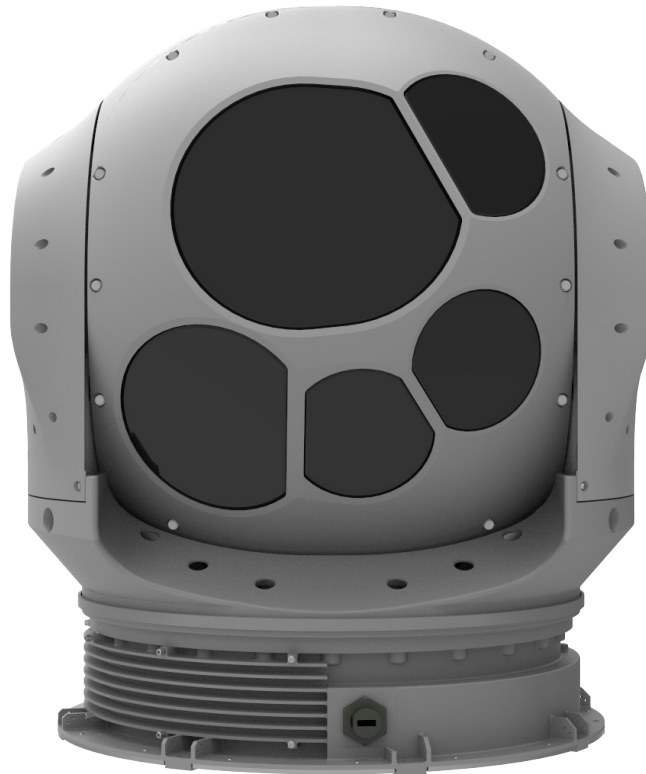


# ASELFIR-400

ELECTRO-OPTICAL RECONNAISSANCE,  
SURVEILLANCE AND TARGETING SYSTEM



- HD IR CAMERA
- FULL HD DAY TV CAMERA
- SWIR CAMERA
- LAZER DESIGNATOR
- LAZER SPOT TRACKER
- LAZER RANGE FINDER
- SWIR ILLUMINATOR
- LAZER POINTER
- SINGLE LRU



# ASELFLIR-400

## ELECTRO-OPTICAL RECONNAISSANCE, SURVEILLANCE AND TARGETING SYSTEM

### Applications

- Rotary and Fixed Wings Air Platforms
- Unmanned Land and Naval Platforms
- Tracked and Wheeled Vehicles
- Reconnaissance, Surveillance and Targeting
- Border/Coast Security
- Long Range Detection, Recognition & Identification

### Main Features

- HD IR Camera (MWIR)
- Full HD Color Day TV Camera
- SWIR Camera
- Compact and Lightweight Design
- Single LRU System
- Superior Range Performance
- Advanced Image Processing
- Multi Target Tracking
- Accurate Target Geo-Location
- Determination of Coarse and Speed of Moving Target
- Inertial Measurement Unit (IMU)
- Gyroscopic Stabilization
- **Option-1 Laser Units:**
  - Eye-Safe Laser Range Finder (LRF)
  - SWIR Illuminator
  - Laser Pointer
- **Option-2 Laser Units:**
  - Laser Range Finder and Designator (LRFD)
  - Laser Spot Tracker

### Technical Specifications

IR Camera	Sensor Resolution: 1024x768
	Wavelength: 3-5 $\mu\text{m}$ (MWIR)
	Fields of View (FOVs) (Horizontal): Narrow: 1.4° Wide: 25.0°
DayTV Camera	Sensor Resolution: 1920 x 1080
	Fields of View (FOVs) (Horizontal): Narrow: 0.71° Wide: 14.02°
SWIR Camera	Sensor Resolution: 640 x 512
	Wavelength: 0.9 - 1.7 $\mu\text{m}$ (SWIR)
	Fields of View (FOVs) (Horizontal): Narrow: 1.6° Wide: 27.0°
Laser Designator (Option-2)	Laser type: Diode pumped ND:YAG
	Wavelength: 1064 nm
	Range: up to 30 km
	Repetition Range: up to 20 Hz
Laser Range Finder	Coding : STANAG 3733 Band I & II
	Option-1 Wavelength: 1550 nm (Eye Safe)
	Option-2 Wavelength: 1064 nm
SWIR Illuminator (Option-1)	Range: up to 30 km
	Wavelength: NIR (Compatible with SWIR Camera)
Laser Pointer (Option-1)	Wavelength: NIR (Compatible with NVGs)
Field of Regard (FOR)	Azimuth: 360° Continuous
	Elevation: +85° to -100°
Communication Interface	MIL-STD-1553B, RS-422
Video Interface	SMPTE-292M HD-SDI (1920x 1080p)
Power Interface	28 VDC
Size	Width: < 437 mm
	Height: < 520 mm
	Weight < 57 kg
Temperature	Operating : -40°C to +55°C
	Storage : -54°C to +71°C

Specifications are subject to change without any notice. | All tolerances are within  $\pm 10\%$ .

